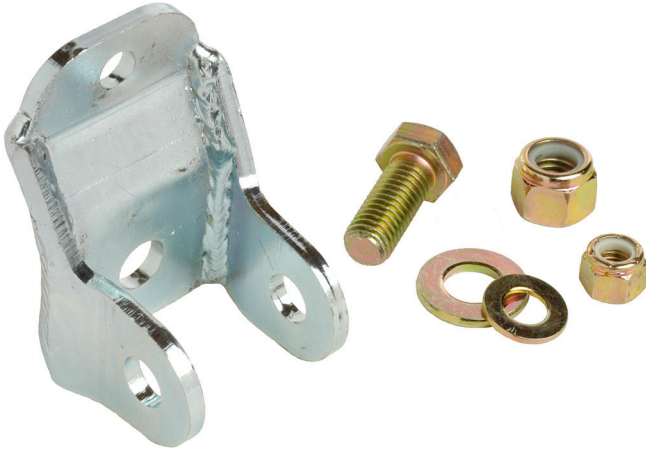


MM Rear Lower Shock Mount (MMSM-2)



Read all instructions before beginning work. Following instructions in the proper sequence will ensure the best and easiest installation.

NOTE: One MMSM-2 kit is used per shock.

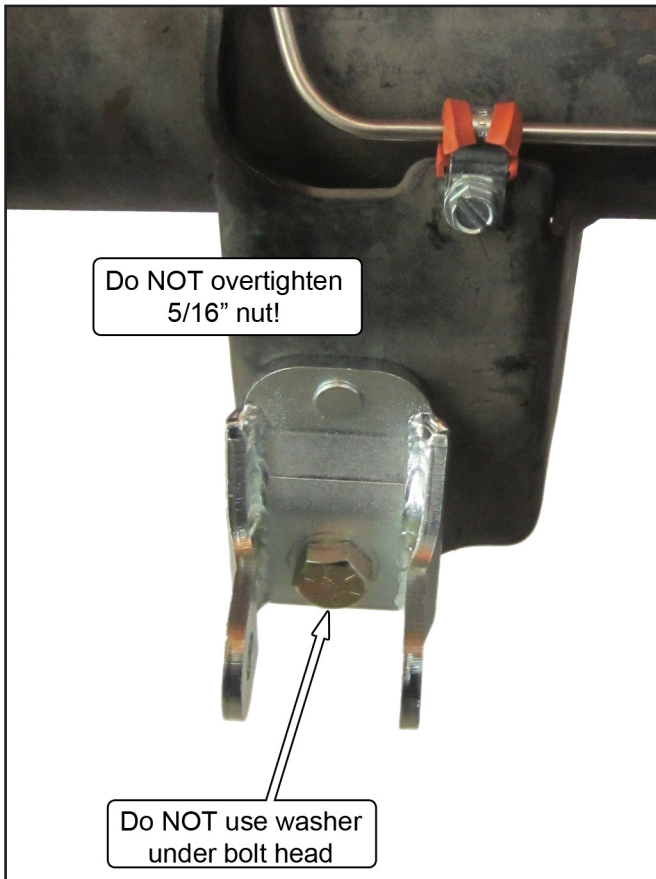
The MM rear lower shock mount is designed to replace the factory lower shock mount with a stronger, more securely attached mount. The higher loads of a coil-over conversion on the original factory shock mount will cause the axle housing to bend. In extreme cases, the single bolt of the factory shock mount has been known to break.

1. Loosen, but do not remove, the lug nuts of the rear wheel.
2. Block the front wheels and jack up the rear of the car. Once raised, support the rear of the car with jack stands under the subframes or torque boxes. With the shocks just short of full extension, support the axle on jack stands.
3. Remove the rear wheel.

4. Remove the rear shock by first removing the bottom shock bolt from the factory lower shock mount. Then remove assembly on top of the shock shaft. If the parts are stock, this includes a nut followed by a thrust washer and rubber isolator.



5. Remove the factory lower shock mount from the axle.
6. Install the MM lower shock mount onto the axle: Insert the 1/2" bolt (no washer) through the lower hole, with the bolt head facing the rear of the car. Then place the 1/2" washer onto the bolt and thread on the 1/2" nut.
7. Place the 5/16" washer onto the 5/16" stud and thread on the 5/16" nut.
8. First torque the 1/2" bolt to 119 lb-ft.
9. Next, torque the 5/16" nut to 16 lb-ft.



For aftermarket shocks: consult the manufacturer's installation instructions.



10. Reinstall the rear shock back into place on the car. Position the shock shaft through the hole (or aftermarket assembly) in the shock tower. If you are installing a MM Rear Coil-Over Kit or a MM Racing Rear Upper Shock Mount at this time, follow those instructions for reinstalling the shock in the car. If this is a stock set-up, continue with Step 11.
11. Insert the lower shock bolt through the MM lower shock mount and the shocks' metal crush sleeve. Torque to 59 lb-ft.
12. Depending upon the height at which the rear axle is supported, you may need to use a jack to raise the axle while installing the shock. Keep the shock shaft centered in the mounting hole of the shock tower as the shock gets positioned.
13. For a stock shock: from inside the car, on top of the shock tower, place the rubber isolator, thrust washer, and nut on top of the shock shaft. Tighten the nut to 30 lb-ft.

14. Reinstall the wheels and tighten the lug nuts.
15. Remove the jack stands and lower the car.
16. Torque the lug nuts to factory specs.

This kit includes the following:

- 1 Lower shock mount
- 1 1/2" x 1-1/4" G8 bolt
- 1 1/2" G8 nut
- 1 5/16" G8 nut
- 1 1/2" G8 washer
- 1 5/16" washer