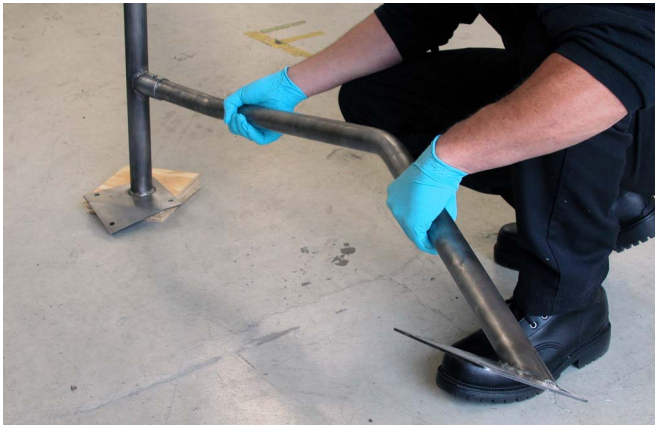


Low Mount Door Bars, Supplemental Instructions (RBO-LB1,-LB2)

Read all instructions before beginning work. Following instructions in the proper sequence will ensure the best and easiest installation.

The supplemental instructions detail how to install Low Mount Door Bars in the car. Refer to this document when you come to the door bar installation section in your main Roll Bar Consumer Instructions.

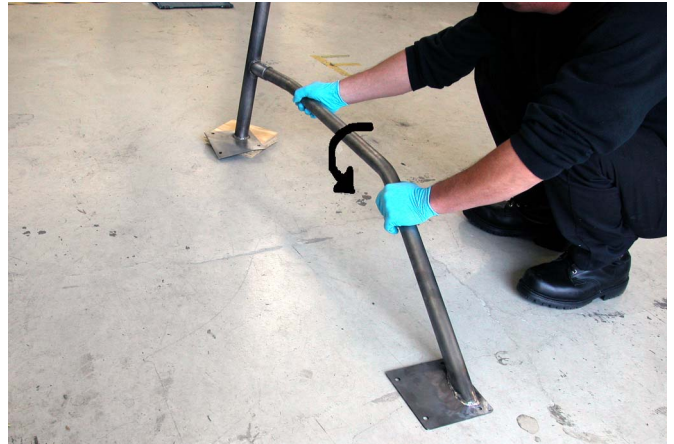
1. With the Door Bar rotated so that the mounting pad is up off the floor, slide the end of the Door Bar into the mounting cup on the Main Hoop.



2. Slide the Door Bar all the way back into the cup.



3. Rotate the door bar so that the Mounting Pad sits flush on the floor of the car.



4. Continue the installation, following the main Roll Bar Consumer Instructions.

NOTE: The provided 3/8" x 2 1/4" long G5 bolts are to be used in place of the 3/8" x 2 1/2" long G5 bolts with the Low Mount Door Bar option.

This kit includes:

- 2 Backup Plate
- 2 3/8" x 2-1/4" G5 Bolt