

MM Front Brake Hose, 2005-up (Mm5BK1F)



Read all instructions before beginning work. Following instructions in the proper sequence will ensure the best and easiest installation.

Warning

DO NOT torque any aftermarket brake fluid bolt to the same specification as an OEM brake fluid bolt. Torque the StopTech fluid bolts in the MM brake hose kits to 14 ft-lbs. Aftermarket fluid bolts will break if the OEM factory torque specification is attempted.

Do not attempt to use an OEM brake fluid bolt with an aftermarket brake hose.

- The banjo fitting on the end of an aftermarket brake hose is thinner than the fitting on an OEM brake hose. The holes in the side of an OEM fluid bolt may be blocked by the aftermarket banjo fitting, reducing the flow of brake fluid.
- Because OEM fluid bolts are longer than aftermarket fluid bolts, when an OEM fluid bolt is used with an aftermarket brake hose, the extra length will protrude further into the caliper. The end of the OEM fluid bolt can interfere with the retraction of the piston. This may become evident only when attempting to install new brake pads.

- Brake hoses can be easily damaged if proper care is not taken. Make sure all brake hoses are routed away from moving driveline and suspension components, and away from the exhaust. Never let an unmounted caliper “hang” by the brake hose assembly! Support the caliper by other means, such as hanging it by a wire. When working on the rear suspension do not let the axle “hang” on the brake hoses.

1. Jack up the car and support it securely on jack stands.
2. Remove the front wheels.
3. Remove the ABS wire from the plastic retainer clips.



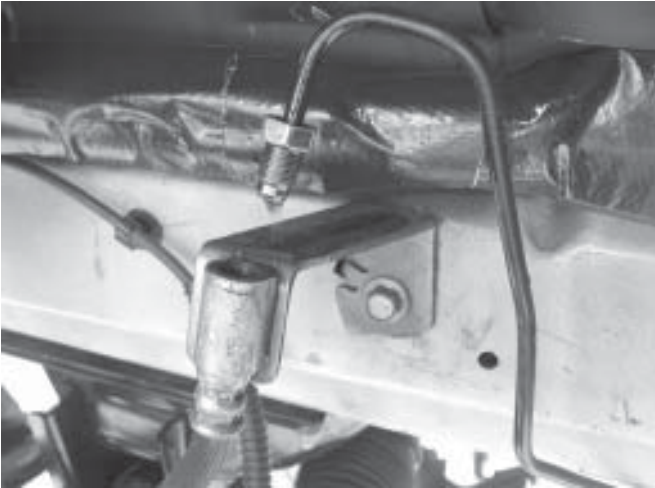
4. Unbolt the stock retainer bracket from the strut body.



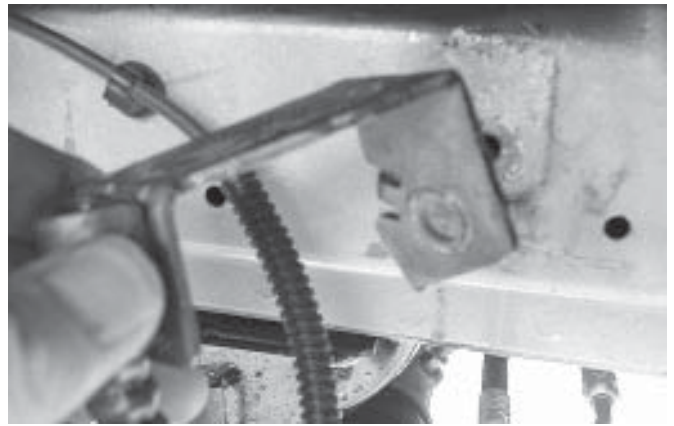
Note: Have one of the tapered rubber plugs handy before performing the following step.



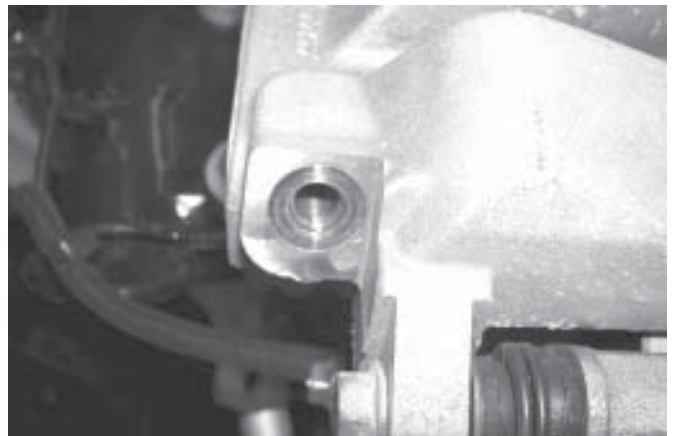
5. Disconnect the hard line. Use a flare nut wrench to avoid rounding off the fitting. Quickly cap it with the rubber plug to minimize fluid leakage.



6. Unbolt the frame rail bracket.

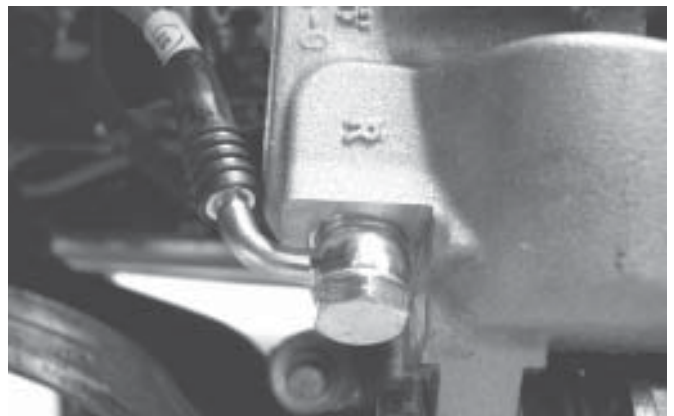


7. Disconnect the fluid bolt at the brake caliper. Discard the OEM brake hose assembly.



8. Place one crush washer under the head of one of the supplied fluid bolts. Pass the bolt through the MM brake hose and place a second crush washer over the bolt so that the brake line fitting is sandwiched between the two crush washers.

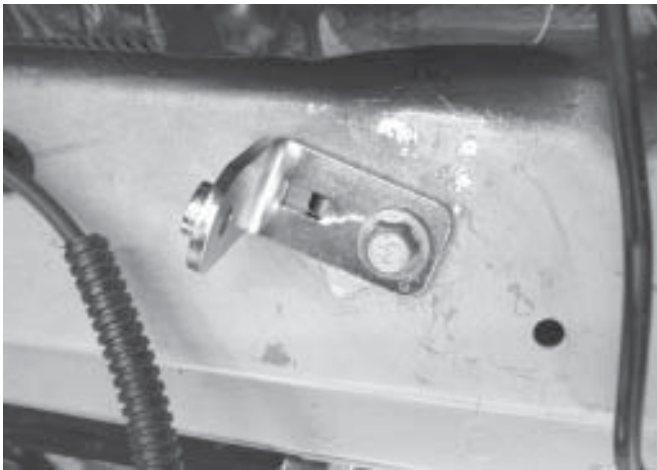
9. Attach the MM hose assembly to the caliper. Orient the hose so that it faces toward the centerline of the car. Photo shows Passenger side, looking toward the front of the car from behind the caliper.



- 10. Torque the fluid bolt to 14 ft-lbs.
- 11. Bolt the plastic retainer bracket to the strut body.



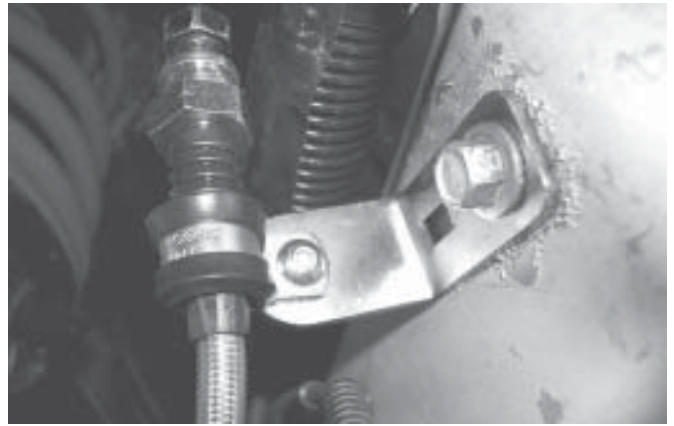
12. Install the new supplied frame rail bracket.



13. Connect the hard line to the MM brake hose.



- 14. Secure the brake hose to the frame rail bracket using the supplied band clamp and button head screw.



15. Using the supplied zip ties, secure the ABS wire to the brake line.



16. Repeat steps 3 thru 15 for the other side of the car.

17. Bleed the brake using the following sequence.

Front of Car

- | | |
|---|---|
| 1 | 2 |
| 4 | 3 |

- 18. Consult a service manual for further information on bleeding air from the brake system.
- 19. After bleeding the brakes system, reinstall the wheels. Lower the car safely to the ground and properly torque the lug nuts.

This kit includes:

- 2 Front Brake Hoses
- 2 Hose Mounting Brackets
- 2 Hose Clamps
- 2 Button Head Cap Screws
- 2 Fluid Bolts
- 4 Crush Washers
- 4 Zip Ties
- 2 Tapered Rubber Plugs