

MM Front Brake Hose Kit, See Application Notes Below (MMBK15F)



Application Notes:

This SN95 caliper swap hose kit **only fits** 1979-1981 Mustang chassis that were originally fitted with a **2.3L normally-aspirated engine** or **2.8L engine**. These Mustangs were also equipped with extremely small front brake rotors, only 9.3" in diameter, and had unique front brake hard line fittings on the chassis. The hard line tube nuts have 3/8"-24 threads. All other 1979-1993 Mustangs have 7/16"-24 tube nuts, and require hose kit MMBK8F when installing SN95 calipers.

Thank you for purchasing Maximum Motorsports' Stainless Steel Brake Hoses. MM brake hoses are designed to maximize the braking performance of your car. You will find that the following features make these hoses the best on the market:

- A unique design allows the hose to swivel during installation. This allows the banjo fitting at the caliper to be perfectly aligned, without twisting the hose or modifying the chassis mounting bracket.
- Banjo fittings are machined specifically for 10mm fluid bolts. These kits do not use a universal banjo fitting for all applications.
- Each individual hose is pressure tested.
- A brake fluid resistant, clear urethane covering is added to help protect the steel braid.
- New fluid bolts and crush washers are included.
- DOT approved.

Read all instructions before beginning work. Following instructions in the proper sequence will ensure the best and easiest installation.

Warnings

Do NOT torque the provided brake fluid bolts to the higher specification of OEM brake fluid bolts. Only torque the provided fluid bolts to 14 ft-lbs, or they WILL break.

Do NOT use an OEM brake fluid bolt:

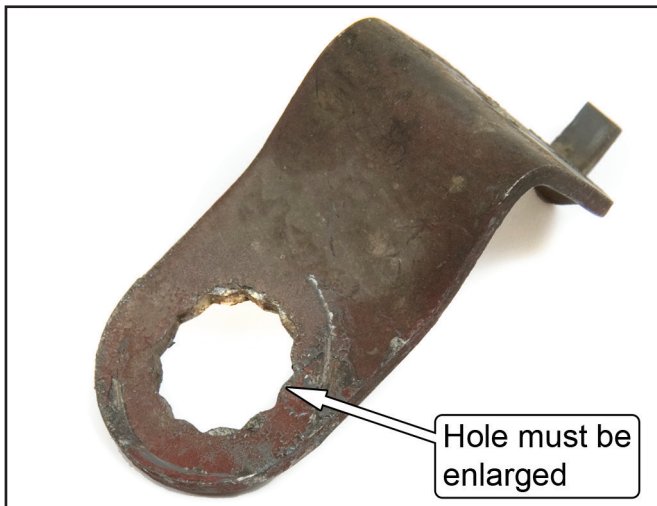
- The banjo fitting on the end of the MM brake hose is thinner than the fitting on an OEM brake hose. The holes in the side of an OEM fluid bolt may be blocked by the banjo fitting, reducing the flow of brake fluid.
- When an OEM fluid bolt is used with the MM brake hose, the extra length will protrude further into the caliper. The end of the OEM fluid bolt can interfere with the retraction of the piston. This may become evident only when attempting to install new brake pads.

Installation

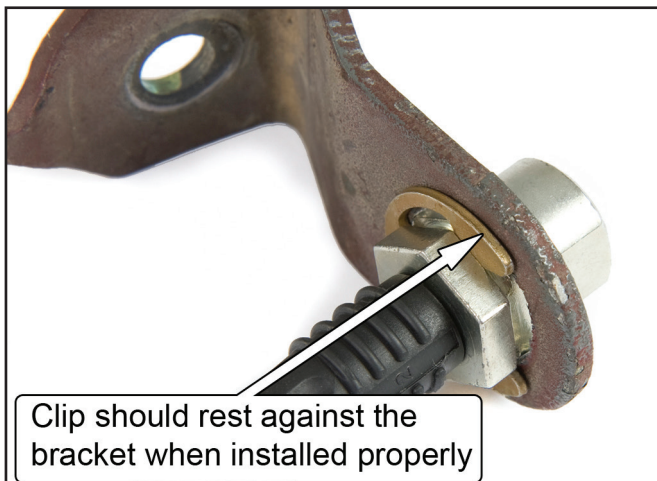
1. Jack up car and support it securely on jack stands under the k-member or the subframe connectors.
2. Remove the front wheels.
3. Remove the stock calipers and spindles.
4. Install the SN95 calipers and spindles.

NOTE: The car must be in an assembled state that allows the new front wheels to be attached and steered, and the suspension cycled, before continuing.

5. Enlarge the hole in the chassis mounting bracket so that the hose end can be inserted thru the hole.



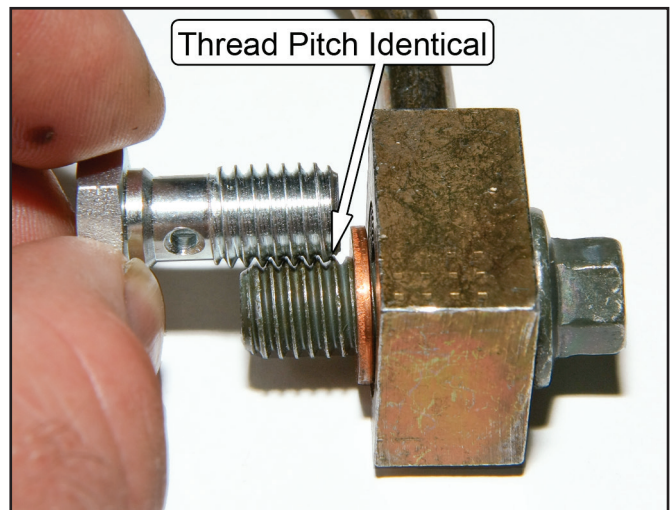
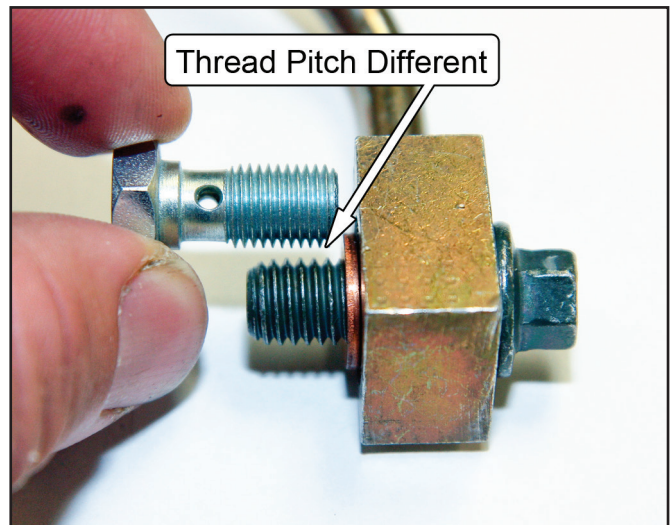
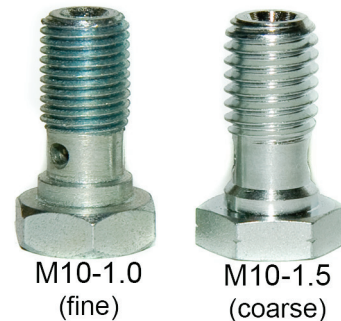
6. Insert the MM hose fitting through the chassis bracket until the 'E clip' seats against the bracket.



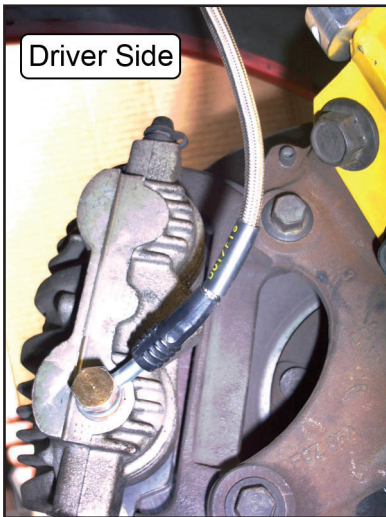
Determine Fluid Bolt Pitch

Two different fluid bolt thread pitches were used for the 1994-04 calipers. One is an M10-1.0 fine pitch and the other is an M10-1.5 coarse pitch. Determine the factory fluid bolt thread pitch by holding the threaded sections of the provided fluid bolts adjacent to the OEM fluid bolts and confirm that the threads mesh together with no air gap.

Fluid Bolt Identification



7. Thread the flare-nut of the chassis hard line into the MM hose end, but leave the flare-nut loose so that the MM hose can swivel.
8. Loosely attach the MM brake hose to the caliper with the correctly identified fluid bolts and crush washers. Orient the banjo fitting so that the bend in the fitting is pointing toward the center of the car.
9. Turn the steering wheel full lock to the right. On the driver side of the car, rotate the caliper end of the MM hose clockwise from vertical so that it is oriented approximately as shown.



10. Torque the fluid bolt at the caliper to 14 ft-lb while holding the black plastic strain relief of the hose to keep the hose from rotating.
11. Turn the steering wheel full lock to the left. On the passenger side of the car, rotate the caliper end of the MM hose counter-clockwise from vertical so that it is oriented approximately as shown.



12. Torque the fluid bolt at the caliper to 14 ft-lb while holding the black plastic strain relief of the hose to keep the hose from rotating.
13. Turn the steering wheel back to center. On both sides of the car, gently push the hose toward the center of the car with one finger. Tighten the flare-nut on the chassis' hard line into the MM hose end. Use a flare-nut wrench to avoid rounding off the flare-nut.

NOTE: It will be necessary to use a wrench to stop the hose end from rotating while tightening the flare nut.

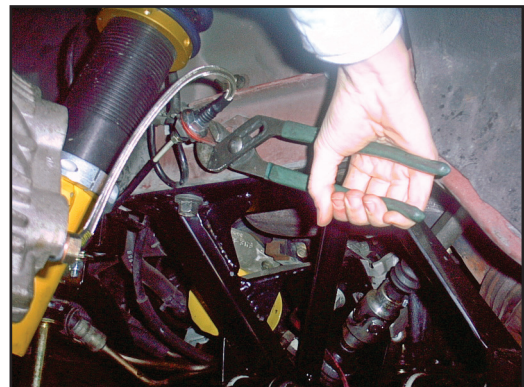
14. Secure the hose end to the chassis bracket by re-using the factory 'C-clip'.

WARNING: It is the installer's responsibility to check for proper clearance between the brake hoses and the tires/wheels throughout the range of suspension movement.

15. Temporarily re-mount the wheels. Check clearances to ensure the hoses will not contact the tire, wheel or K-member. Have a helper turn the steering wheel from lock to lock. If it does rub, the tire or wheel *will* wear through the hose.

If the hose rubs the tire or wheel, you can bend the chassis tab toward the rear of the car to gain more hose to tire clearance.

If the hose rubs the K-member, but has good clearance to the tire and wheel, you can bend the chassis tab toward the front of the car.



16. Bleed the brake system in the order shown below.

Front of Car

4	3
2	1

NOTE: If you are unfamiliar with brake bleeding techniques, consult a service manual for further information on bleeding air from the brake system.

17. Have a helper firmly depress the brake pedal multiple times while you inspect the brake lines and fittings for leaks.

18. Reinstall the front wheels and torque the lug nuts to factory specifications. Lower the car to the ground.

19. Firmly block the rear tires to prevent the car from rolling. Now that the suspension is compressed, inspect the brake hose clearance with a mechanic's mirror while a helper turns the steering wheel from lock, to lock as in Step 15.

20. Test Drive and enjoy.

This kit includes:

- 2 Front Hose
- 2 Fluid Bolt M10-1.0
- 2 Fluid Bolt M10-1.5
- 4 Copper Crush Washer